

## Fulbourn Parish Precept –

in view of the current cost of living crisis and conscious that many people are struggling to pay their bills, the PC has not raised the precept for the Council tax year year 2023/2024 and has budgeted accordingly. No major projects will be undertaken in this tax year.

## New Council houses

SCDC are purchasing 30 homes with a Government grant of 4.5 million. These homes will initially house Ukrainian guests and will revert to Council house stock once the war is over and the houses vacated.

## New Parish Councillor

*Following several months of observing Parish Council meetings after expressing a desire to become a Parish Councillor, Kim Howell was co-opted onto Fulbourn Parish Council at the meeting held on 8th February 2023 and was welcomed by the Chair and Councillors. There is still one casual vacancy on Council.*

## Notices / Dates for your Diary

**Reporting potholes/footpaths - You can report highways or footpath faults/potholes etc by using Cambridgeshire County Council's Highways Reporting Tool. Faults reported in this way will be assessed by a Local Highways Officer within 10 working days - [www.cambridgeshire.gov.uk](http://www.cambridgeshire.gov.uk)**

<b>22 Apr</b>	<b>2.00pm</b>	Repair Cafe – Townley Hall
<b>10 May</b>	<b>7.30pm</b>	PC meeting – the Swifts
<b>27 May</b>	<b>8.00pm</b>	Sarah McQuaid at Fulbourn United Reform Church
<b>10 Jun</b>	<b>2.30pm</b>	Community Market – Townley Hall
<b>14 Jun</b>	<b>7.30pm</b>	PC meeting – the Swifts
<b>12 Jul</b>	<b>7.30pm</b>	PC meeting – the Swifts

**Fulbourn Ladies Group** meet on the **1st Tuesday** of the month. Contact Jean Doe on **01223 881098** for further information.

**Bingo! Fridays at the Swifts** – contact **John Shepherd** on **01223 880713** for further details.

**Fulbourn Community Aid** – still here for you.  
Tel: **01223 665051**  
email: [fulbourncommunityaid@gmail.com](mailto:fulbourncommunityaid@gmail.com)

## PARISH COUNCILLORS

Mary Drage, <b>Chair</b>	<b>880712</b>
Derek Thorn <b>Vice Chair</b>	<b>881309</b>
Angela Bramwell	<b>07500 846652</b>
Dawne Brown	<b>573495</b>
Ray Butler	<b>881871</b>
Graham Cone	
<b>and District Councillor</b>	<b>07595 361285</b>
Kim Howell	<b>07772 495337</b>
Jane Gaskell	<b>07711 341203</b>
Kieron Johnson	<b>882502</b>
Robert Lacey	<b>881469</b>
Tina Lockwood	<b>881713</b>
Rebecca Roberts	<b>364844</b>
Dave Smith	<b>881334</b>
Gill Ward	<b>881757</b>
<b>Parish Clerk</b>	
Tish Newman	<b>785683</b>
<b>District Councillor</b>	
Carla Hofman	<b>01223 295996</b>
<b>District Councillor</b>	
John Williams	<b>07483 240710</b>
<b>County Councillor</b>	
Claire Dauntton	<b>07905 473395</b>
MP - Lucy Frazer	<b>020 7219 5082</b>
<a href="mailto:lucy.frazer.mp@parliament.uk">lucy.frazer.mp@parliament.uk</a>	

Bookings for the Swifts and news items for the Village Web site – publicise your event  
Contact Cllr Derek Thorn, Tel: 01223 881309, Mon-Fri between 9am and 5pm only  
email: [derek.thorn@tiscali.co.uk](mailto:derek.thorn@tiscali.co.uk)

Parish Clerk [clerk.fpc@btconnect.com](mailto:clerk.fpc@btconnect.com) Parish Office **01223 785683** Parish web site [www.fulbournpc.org](http://www.fulbournpc.org)  
Published by Falcon Print Services and distributed by Fulbourn Parish Council



# THE VILLAGE PUMP

FULBOURN PARISH COUNCIL NEWSLETTER  
ISSUE 73 - APRIL 2023



## ANNUAL PARISH MEETING 27th April 2023 at 7.30pm AT THE SWIFTS, HAGGIS GAP, FULBOURN

- |   |                                |
|---|--------------------------------|
| <b>1</b> Minutes of last APM                          | <b>5</b> Neighbourhood Plan    |
| <b>2</b> Finance Report followed by Village Charities | <b>6</b> School Reports        |
| <b>3</b> County Councillor's Report                   | <b>7</b> Church Reports        |
| <b>4</b> District Councillors' Reports                | <b>8</b> Village Organisations |
|   | <b>9</b> Any other business    |

## Fulbourn Neighbourhood Plan

A successful Referendum was held on 9th February 2023. South Cambs District Council will now start the sign off process for the making of the Fulbourn Neighbourhood Plan which ends with it being presented to SCDC full Council on 30 March 2023. Fulbourn Parish Council wishes to thank all those volunteers who have worked tirelessly over the last 5 years to put the Neighbourhood Plan together and get it to the Referendum stage.

## Electric Buses

30 new zero emission double decker buses are due to join the Stagecoach fleet by the end of April as part of the Zero Emission Buses Regional Area (ZEBRA) Scheme.

The buses will be used on the five Cambridge park and ride routes as well as the Citi 2 service which links Cambridge North Station with the City Centre and Addenbrooke's Hospital.

In addition works are close to completion on refitting Cowley Road bus depot in Cambridge with simultaneous overnight charging facilities for all 30 buses.

## WANTED!

**Fulbourn Parish Council is looking to recruit an Assistant Parish Clerk.**  
**Please contact Tish Newman, the Parish Clerk, on 01223 785683 or email [clerk.fpc@btconnect.com](mailto:clerk.fpc@btconnect.com) for further details.**



## Volunteers needed for Fulbourn Community Car Scheme Can you help?

Please contact us. Email: [fulbourncarscheme@gmail.com](mailto:fulbourncarscheme@gmail.com) or telephone: 01223 756446

In the last 12 months the volunteers of Fulbourn Community Car Scheme has undertaken 206 journeys and we have travelled over two thousand miles in total. We offer transport to residents of Fulbourn, Teversham and the Wilbrahams who do not have the use of a car, and struggle to use public transport. We have helped people to attend medical appointments (including dentists, opticians and hearing clinics), to visit the hairdresser, and we have also transported passengers for shopping expeditions, to visit loved ones in care homes and for social visits.

**HOWEVER**, we are struggling. Whilst we do our very best to help every person who needs us, there have been occasions when we cannot provide transport because a driver is not available. Hence the plea: could **YOU** help us provide this facility for those who have no alternative mode of transport? We do not expect a regular commitment.

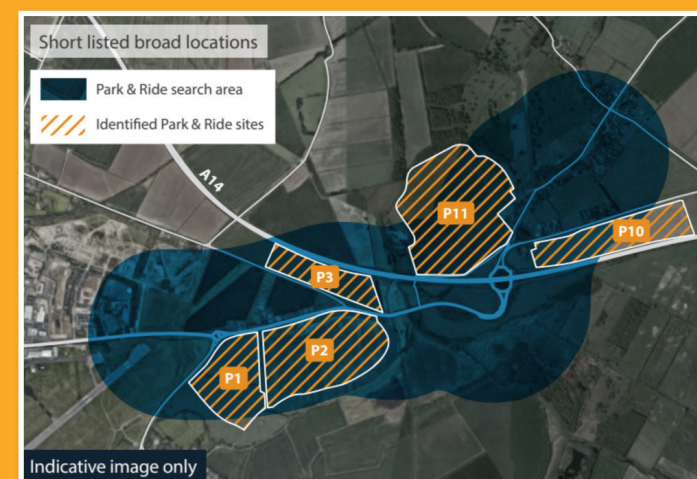
Drivers undergo an enhanced DBS check, and you should have a full driving licence, and your own fully insured car. The passenger will pay you 30p per mile of the journey with a minimum of £3.00, and this is topped up the Cambridgeshire and Peterborough Combined Authority by a further 15p per mile travelled. Any further expenses, for example car parking fees, will be reimbursed.

If you have a need of transport, please get in touch. Also, if you think you may be able to join the team, we would be delighted to hear from you. Our contact details are noted above.

## CHANGES TO THE NEWMARKET ROAD LAYOUT

The Greater Cambridge partnership is consulting on changes to the Newmarket Road layout and the relocation of the Park & Ride site.

The detailed designs project includes better cycle lanes, new signal-controlled cycle & pedestrian priority junctions – which prioritise walking and cycling – new bus lanes, floating bus stops, and improved footpaths and the relocation of the Park & Ride site.



### SITE APPRAISAL

The appraisal of the five shortlisted sites identified that:

- **Preferred Site P1:** P1 is the preferred site for a relocated Park & Ride as although it was assessed as having a moderate/high impact on the purpose of the green belt, no significant environmental impacts are predicted, it can deliver the quickest bus and cycle journey times into Cambridge, and is well located to complement the proposed busway through the Cambridge Airport site.
- **P2:** Was ranked second. In comparison to P1, P2 was assessed as having a moderate impact on the purpose of the green belt. However, the appraisal raised concerns with potential environmental impacts to ecology and archaeology, being located closer to Quay Water and the SSSI.
- **P3:** Was ranked third. The appraisal raised concerns with potential impacts to ecology and archaeology, is privately owned and was considered to have the highest potential impact on the function of the green belt.
- **P10/11:** Were ranked last as they provide the slowest bus and cycle journey times into Cambridge, there is potential for environmental impacts to the residents of Stow cum Quay, and substantial bus priority infrastructure will be required.

## Fulbourn Action for Youth – Trustees and volunteers needed

Most of you will have seen the new Fulbourn Hub and know that FA4Y currently runs two youth clubs and a music studio. Fulbourn Action for Youth was formed in 2006. Following cuts to youth provision by Cambridgeshire County Council, FA4Y became a registered charity in June 2010. Since 2010, FA4Y has worked hard to ensure there is youth provision in the village and has liaised with the Parish Council which provides a yearly grant that helps fund the youth workers. FA4Y also lobbied for a new building and, again, liaised with the Parish Council which has resulted in the wonderful facility of the Fulbourn Hub housing the Youth, Scouts and Parish Council. It is a great asset for the village and means its young people now have a purpose built youth lounge and music studio. These are well equipped through generous donations from village organisations, businesses and parishioners.

It is important that FA4Y's future is secure. For some time now I have been asking for people to come forward to take over as Trustees. At present FA4Y has 3 Trustees, all of whom are in their mid 70s and above. The present Trustees have been involved with FA4Y since its inception and it has been really rewarding to see the result of our efforts. However, it is now time for the next generation to take over and ensure continuity. So the present Trustees are stepping down at the end of July 2023 but will be available to work alongside new Trustees for the remainder of 2023 to make sure the handover is smooth. So far someone has volunteered to take over the financial role. A team of 6 would be ideal. In addition, more youth workers and volunteers are needed and FA4Y are able to provide the training needed. It should be pointed out that paid youth workers cannot be trustees. FA4Y is also still looking to recruit a Youth and Community Development Manager to run the Youth Lounge and Music Studio and to expand the provision for the benefit of the young people and families in the village and surrounding area.

### WITHOUT NEW TRUSTEES FA4Y WILL NOT BE ABLE TO OPERATE.

If you are interested and would like to discuss this further please contact:

Alex Andrews, Chair Trustees 01223 881246 - [alex.andrews@ntlworld.com](mailto:alex.andrews@ntlworld.com)

## Thursday Shopper Bus

for the last few months only 2 people have been using the Thursday Shopper Bus each week.

Unless numbers increase the PC will have to cease providing this service as it is not cost effective so please spread the word to encourage more people to use it.

## FULBOURN HUB

Landscaping of the garden of Fulbourn Hub has just been completed and the PC is very pleased with the transformation. The PC is grateful to Morris Homes, the developers of the Ida Darwin site, for their donation of £5000 towards the cost of the works (£13,000) which helped considerably.



**ELECTORAL REFORM** – from 4th May 2023 voters will need to have photo ID as proof of identity before they are able to cast their vote. Full details can be found on the Electoral Commission's web site including details of what to do if you do not possess photo ID. [www.electoralcommission.org.uk](http://www.electoralcommission.org.uk)